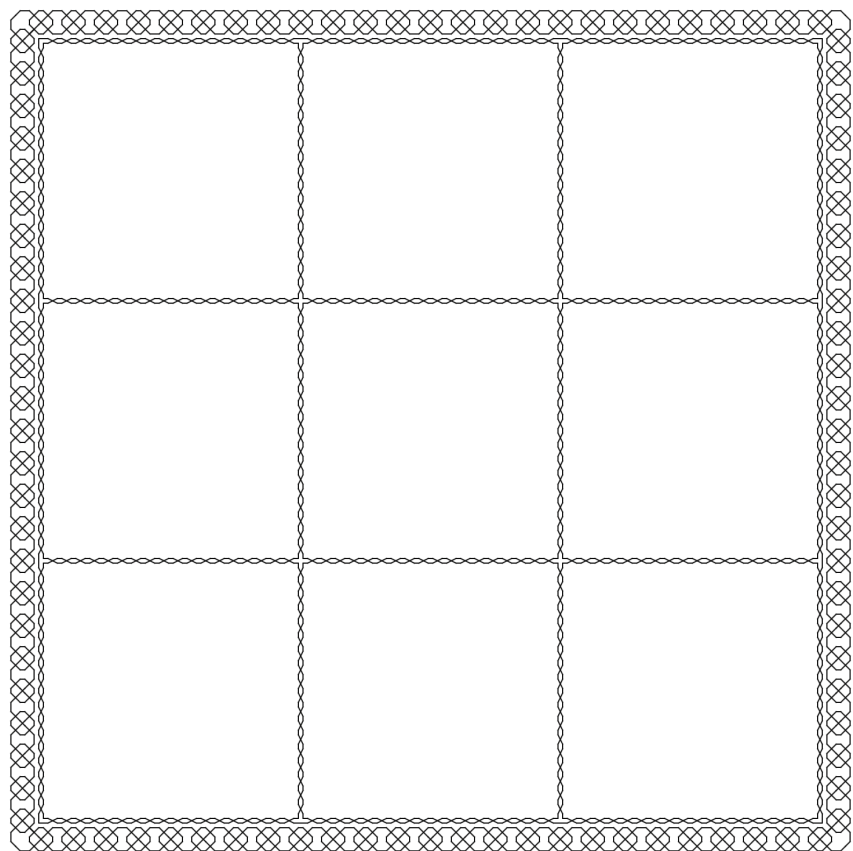
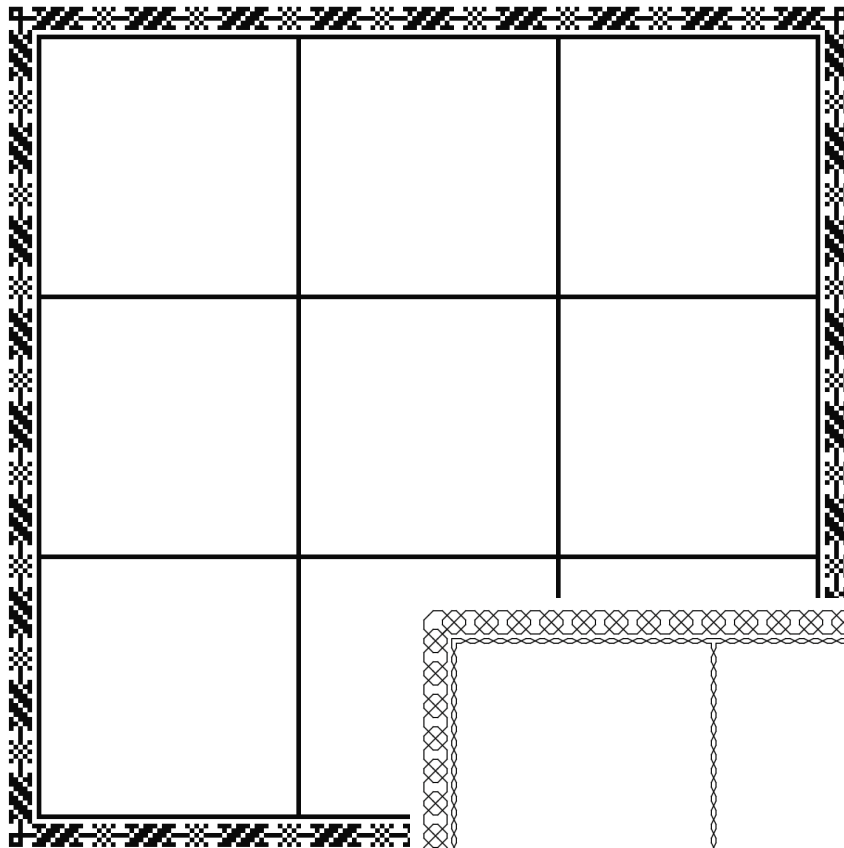


# Cliffside Stitches - Renaissance SAL - 2026

## Introduction and Templates





As printing technology spread in 16th-century Europe, needlework pattern books became a popular publishing phenomenon. With designs appropriate for techniques such as lacemaking, drawn thread work, cutwork, cross stitch, and blackwork, they gave the middle class an opportunity to create the kinds of artistic textiles previously reserved for the elite. Because the concept of copyright was not known at the time, publishers freely used material from other texts. The same motif can often be seen in multiple sources and it can be difficult to determine who originated a particular pattern.

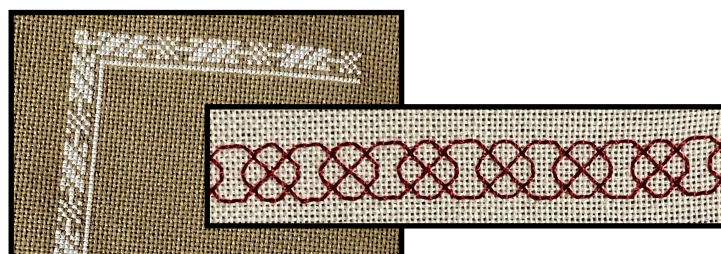
This SAL has largely been inspired by motifs from pattern books published in France, Germany, and Italy in the first half of the 16th century - the late Renaissance. In some cases, I've closely replicated the historical motifs; in other cases, I've modified, embellished, condensed, or combined the motifs. However, I have always aimed to capture the spirit of the original sources.

The SAL project consists of nine squares arranged in a 3 x 3 grid. One square will be released on the first day of the month for nine months, beginning on March 1, 2026. The stitch count for each design within the squares is 51 x 51. I've tried to balance the arrangement of squares with some symmetry in the composition, but you can experiment with the layout and arrange the squares in any way you like.

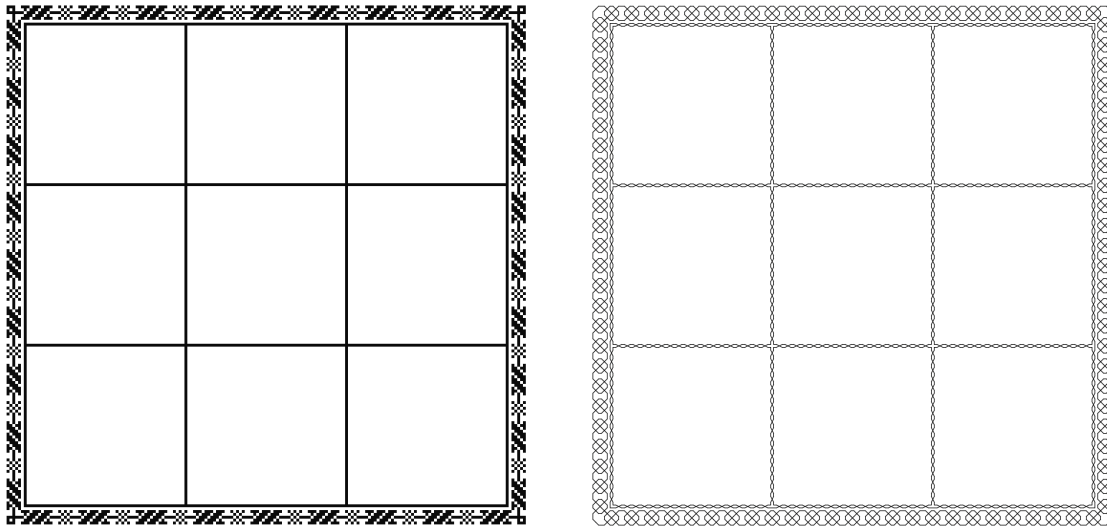
I've given one cross stitch and one blackwork template option. You can also create a template using any framing of your choice. You can stitch the full template before beginning the project, or you can stitch it as you go along. The stitch count for both the cross stitch and blackwork versions is 181 x 181.

The monthly charts will be presented in monochrome, and you can select any palette that appeals to you for the fabric and threads. You can stitch the entire project using one solid or variegated floss, you can stitch each square in a different shade, or you can stitch polychrome versions of the designs within each square. Everyone is encouraged to create a project that is uniquely theirs!

The model of the cross stitch border at right was stitched on 28-count amaretto evenweave, one over one, using DMC 3865. The blackwork model was stitched over two on 28-count bone evenweave with Sulky 12 wt 1169.



# Cross Stitch and Blackwork Templates



The cross stitch template has a solid cross stitch outline around each of the squares; the blackwork template has a chain outline around each square. With either template, each square will have two blank, unstitched rows between the design and the outline. Both templates have a 5-stitch-wide border that surrounds the grid of squares, with one blank row between the grid outlines and the outer border.

Keep in mind that you can mix and match: cross stitch grid outlines and blackwork outer border, or vice versa. You could also use the full cross stitch template with blackwork designs within the squares, or the full blackwork template with cross stitch designs. And you could do some squares in cross stitch, others in blackwork.

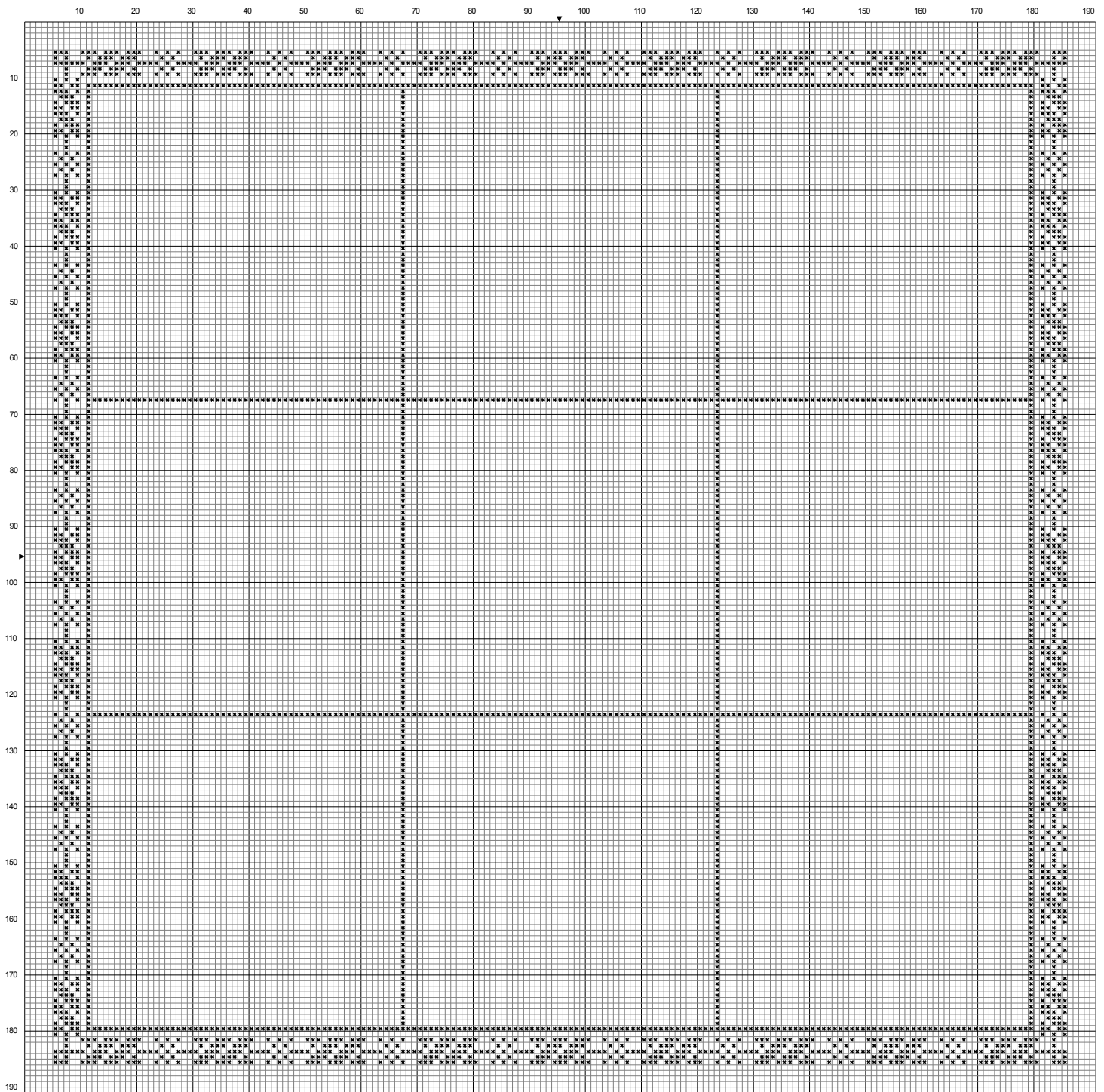
You could also do without the templates provided, working a simple backstitch outline around each square and a solid cross stitch line around the entire sampler. Or, for an open effect, you could select one of the outer borders (or any border you like) but omit the grid outlining, just leaving five blank spaces between the squares. The choice is yours!

Stitch count for either template, with border: 181 x 181.

Approximate design size:

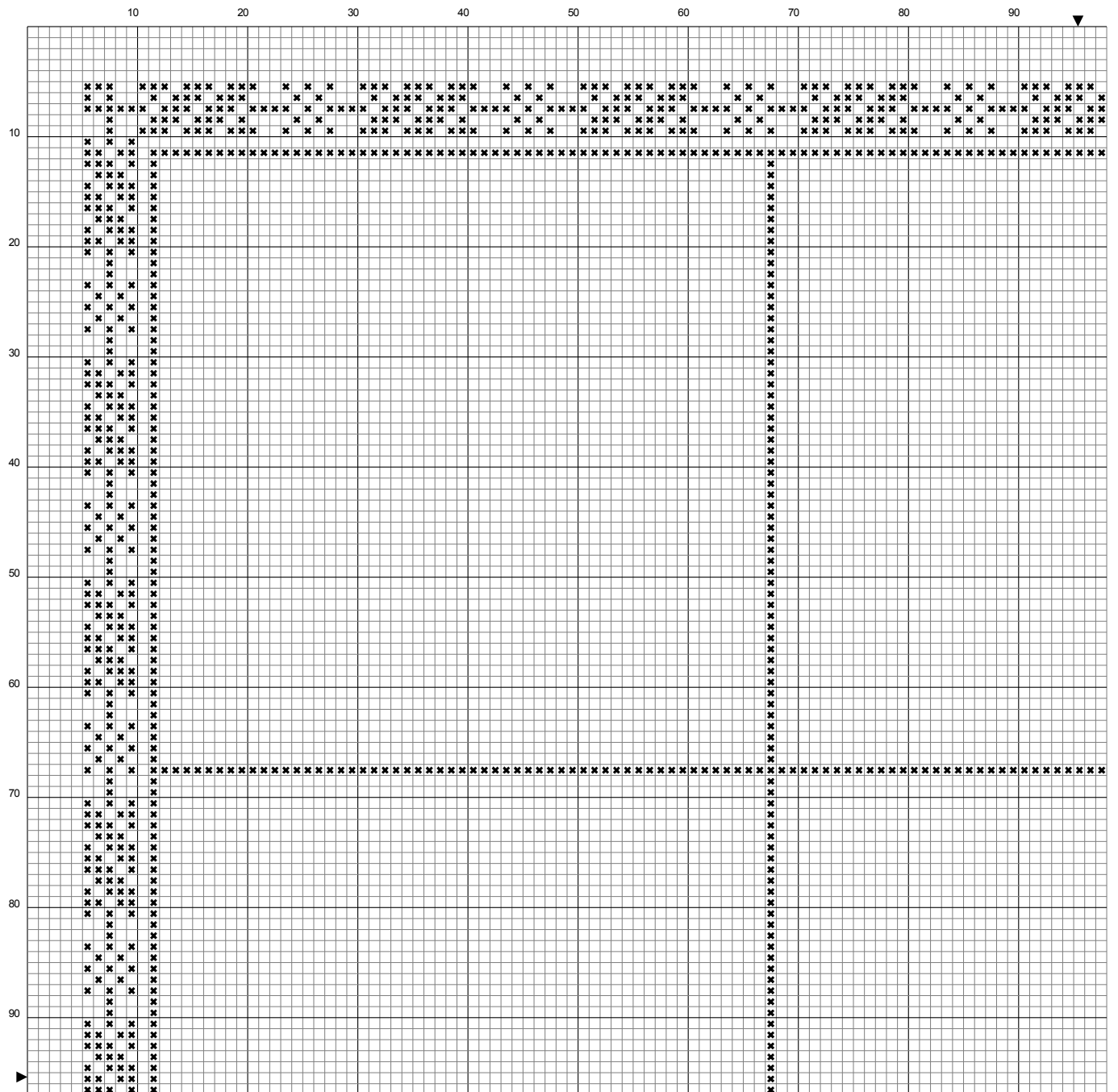
- on 14-count aida / 28-count evenweave - 13 x 13 inches.
- on 16-count aida / 32-count evenweave - 11.5 x 11.5 inches.
- on 18-count aida / 36-count evenweave - 10 x 10 inches.

# Cross Stitch Template - Full Design

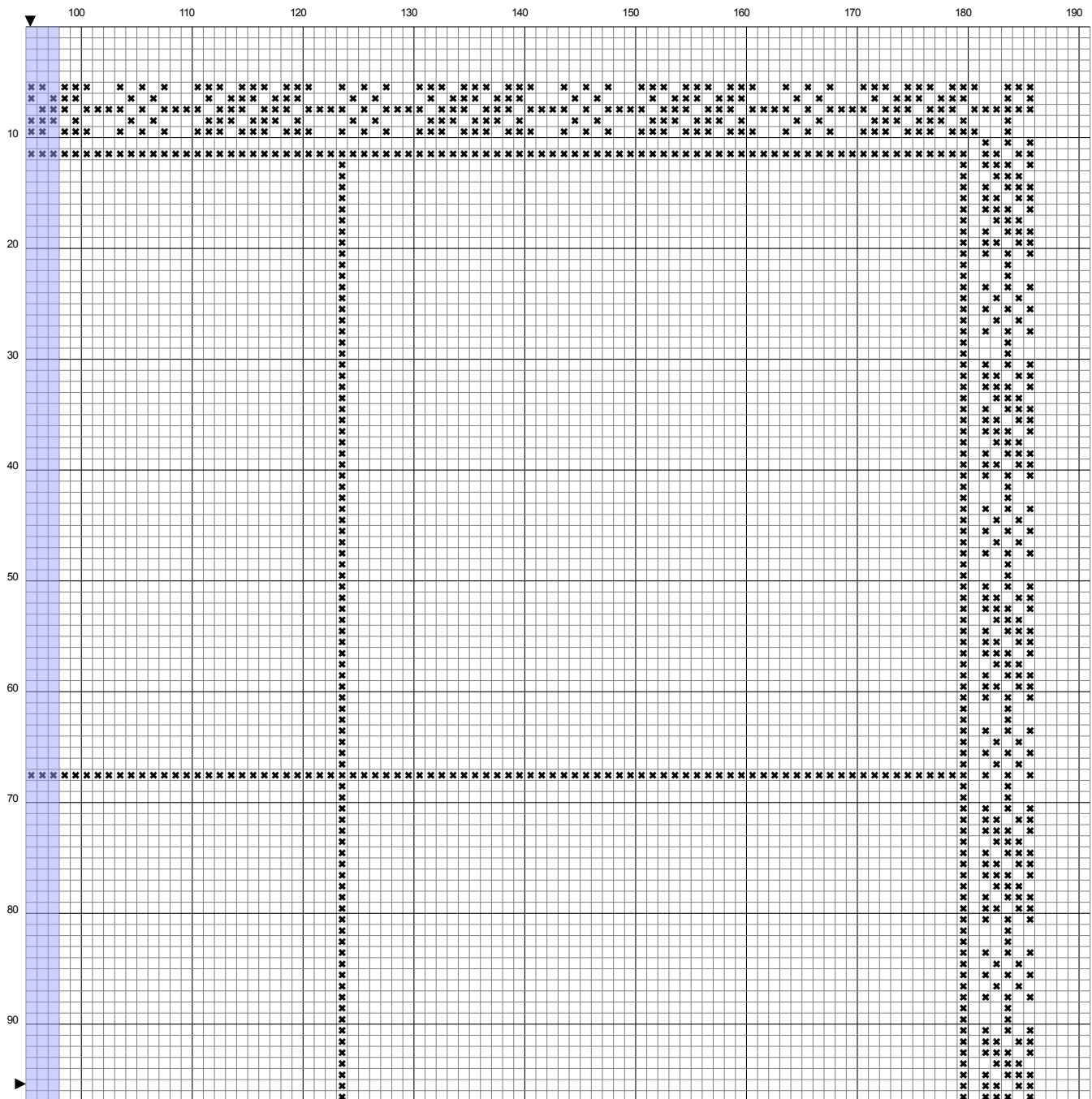




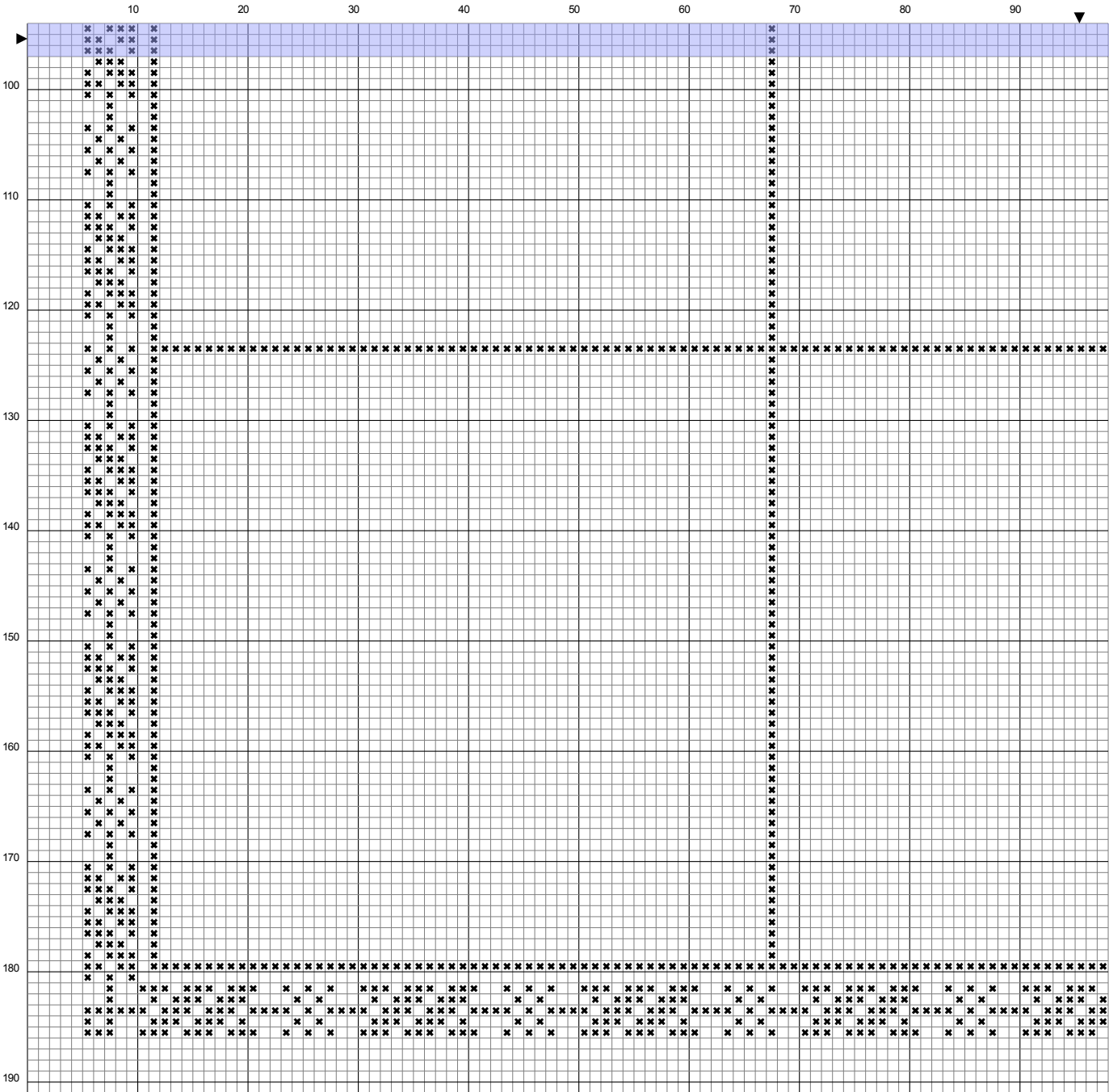
# Cross Stitch Template - Upper Left



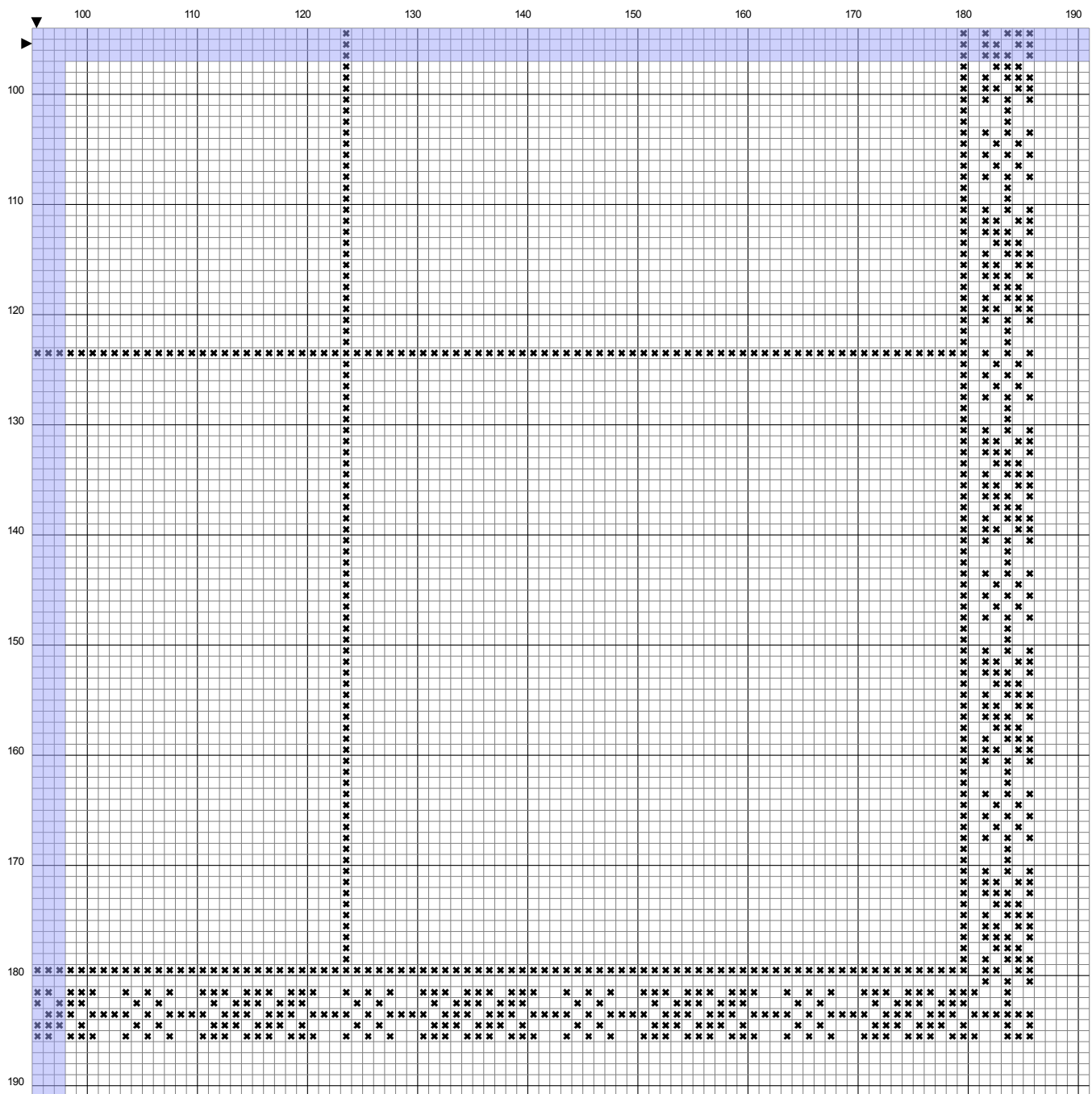
# Cross Stitch Template - Upper Right



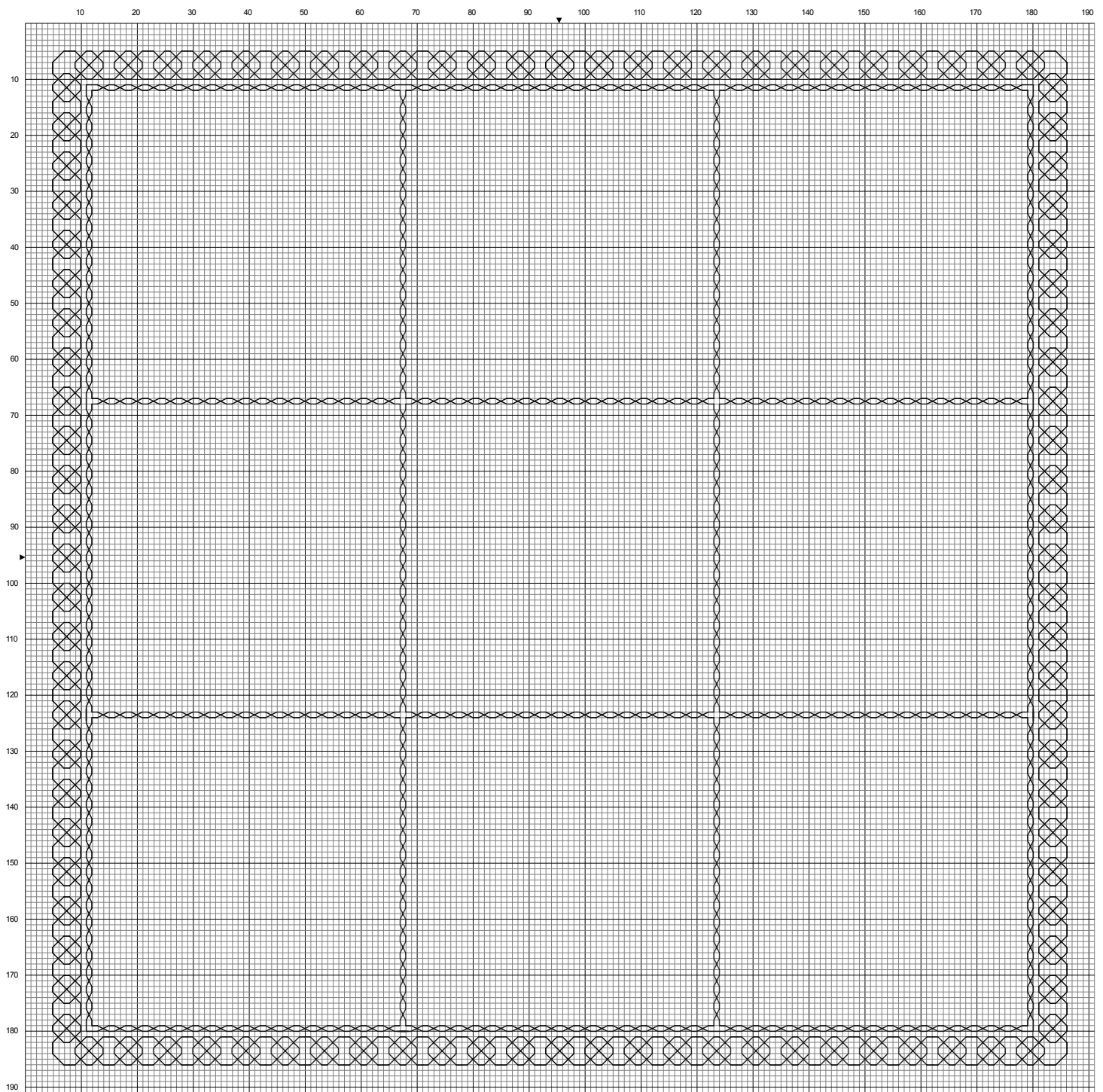
# Cross Stitch Template - Lower Left



# Cross Stitch Template - Lower Right

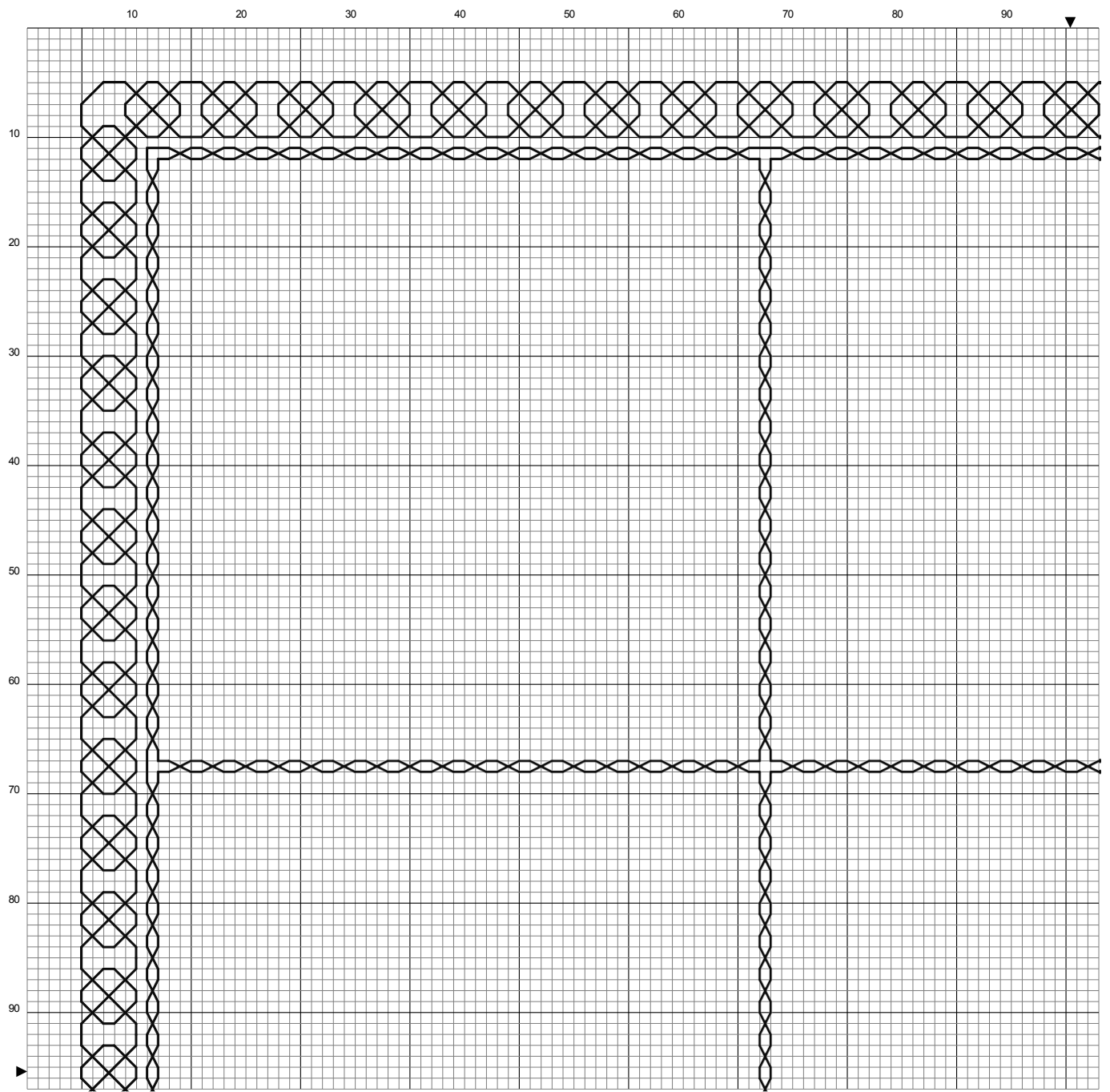


# Blackwork Template - Full Design

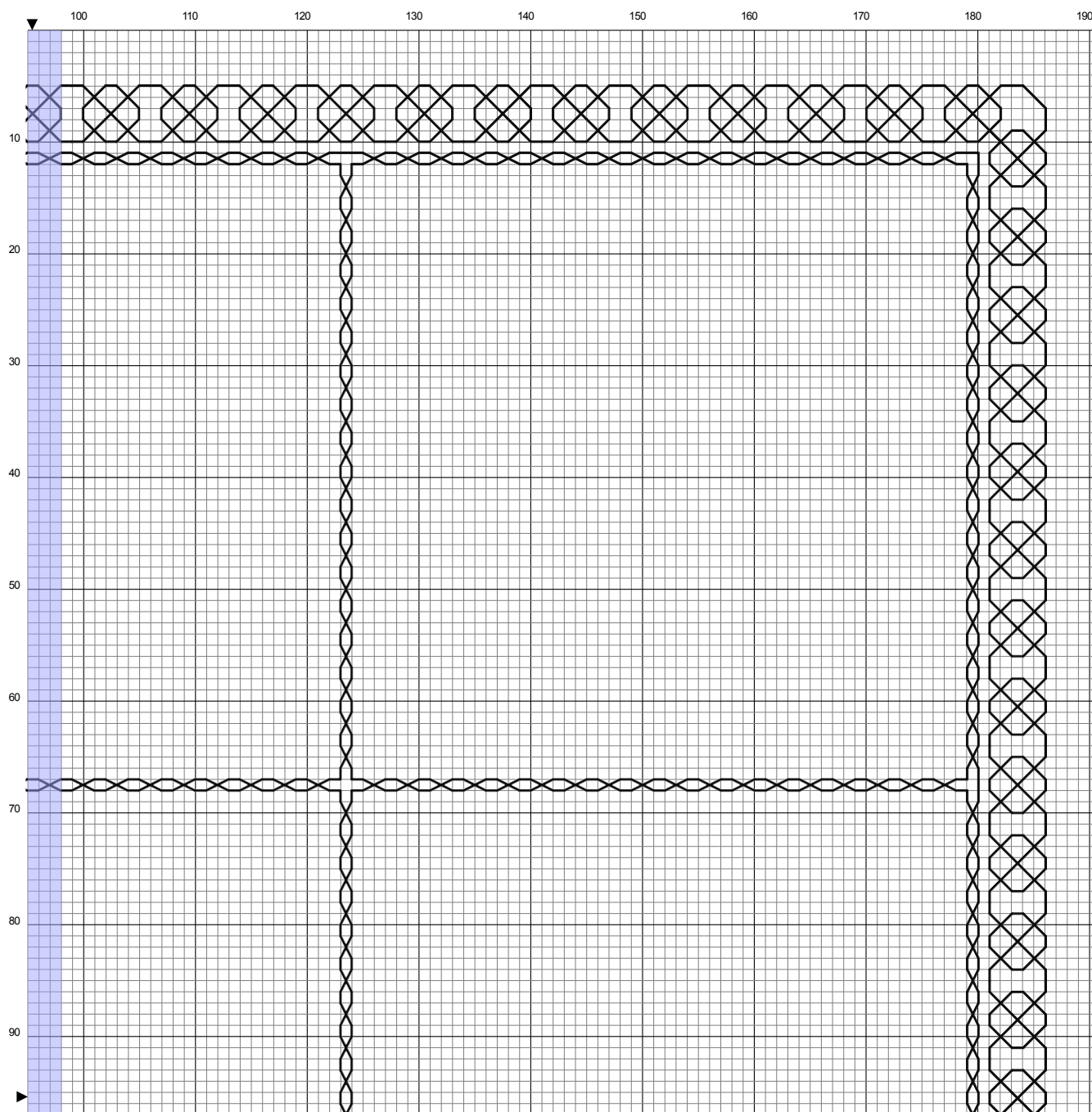




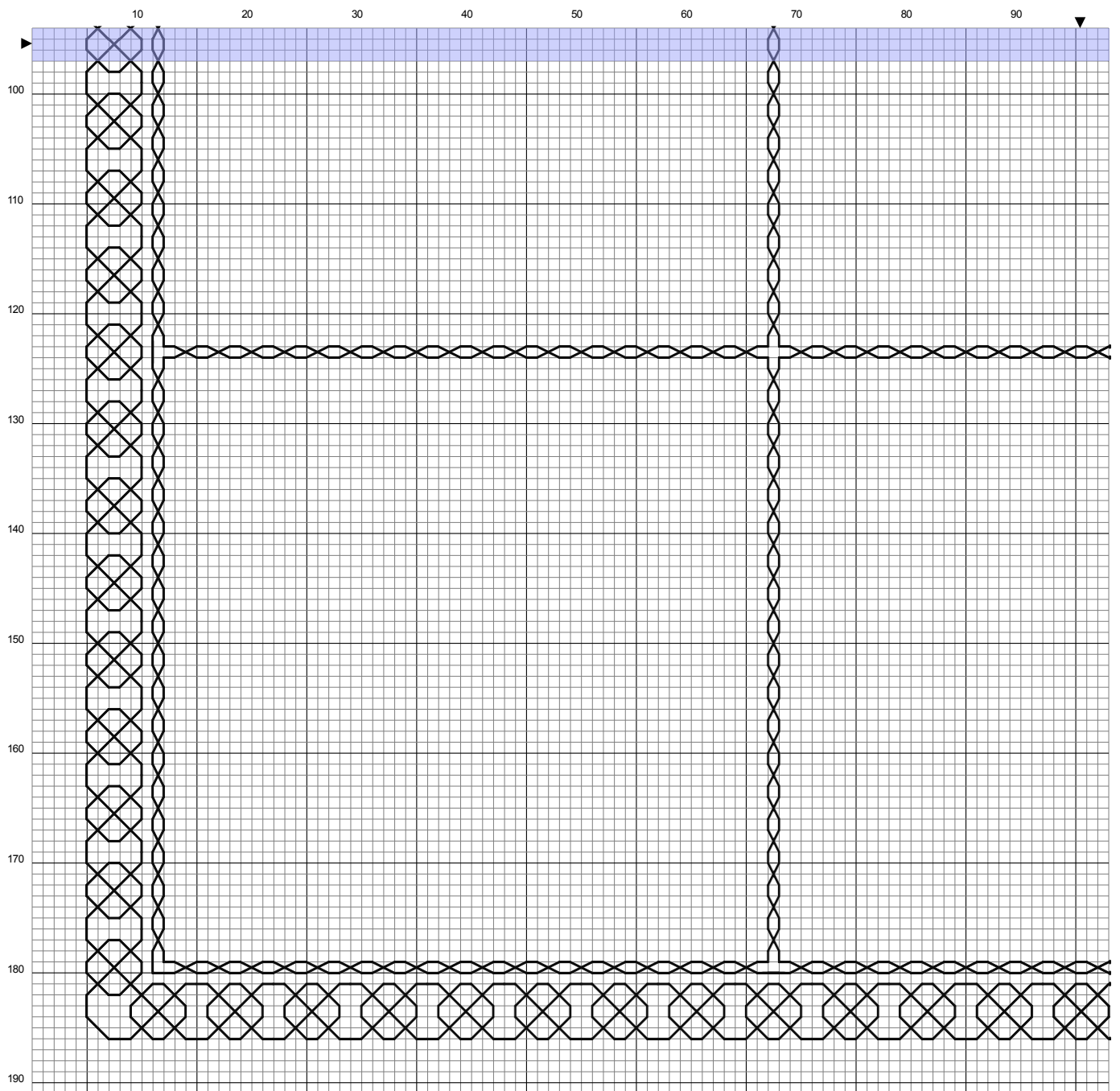
# Blackwork Template - Upper Left



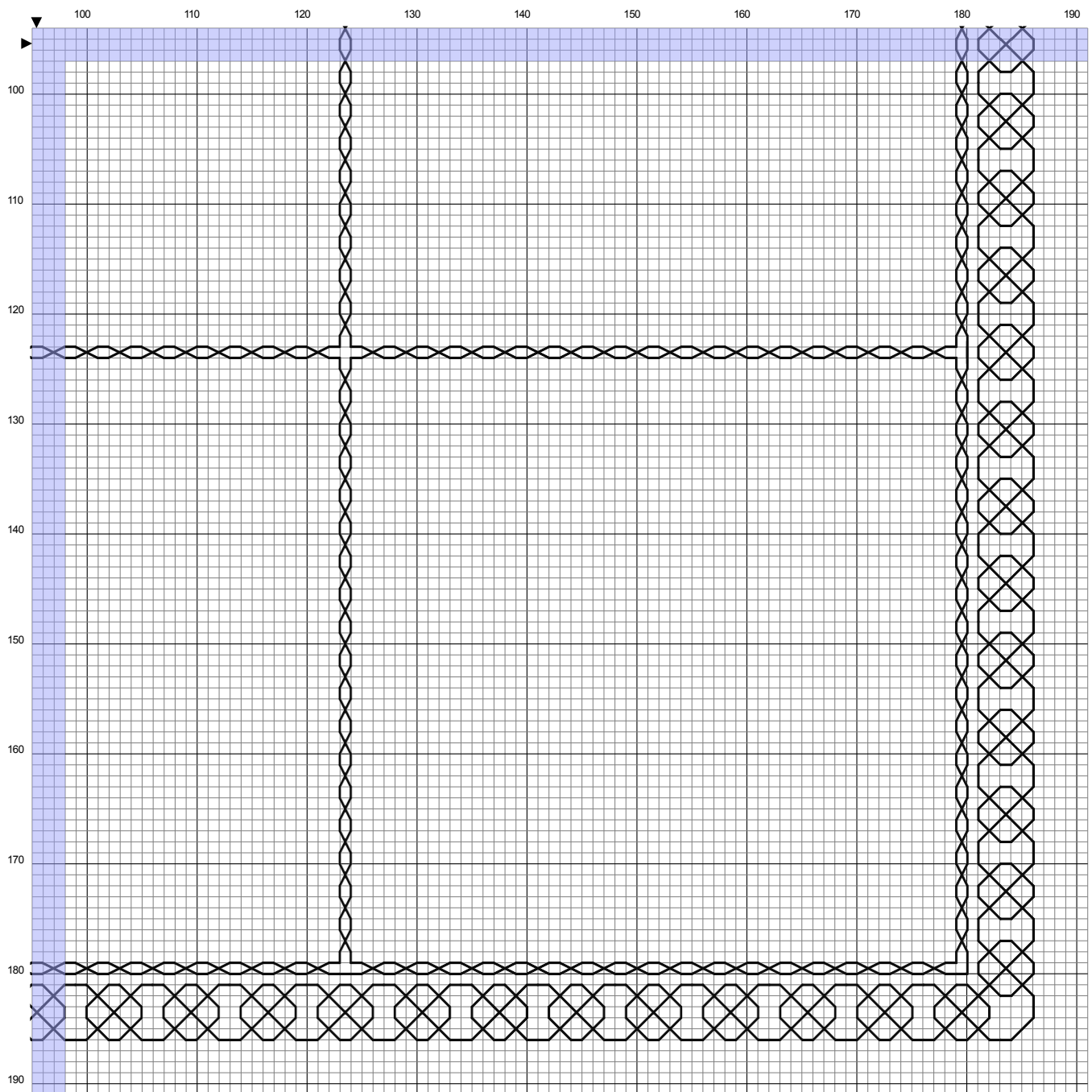
# Blackwork Template ~ Upper Right



# Blackwork Template ~ Lower Left



# Blackwork Template ~ Lower Right



# Renaissance SAL - 2026

## STITCHING NOTES

### Floss

If you are stitching in monochrome, you will need approximately 11 skeins to complete the pattern entirely in cross stitch (assuming you are using two strands of floss), and approximately 3 skeins to complete the pattern entirely in blackwork (assuming that you are using one strand of floss).

If you choose to do backstitch outlines around each motif, you can use a single strand of floss, or two strands for a more pronounced line.

### Fabric

There are no fractional stitches in the charts. You can use aida or evenweave/linen.

When preparing your fabric make sure that you have enough to leave a 2-3" unstitched border around all sides of the design for finishing.

## A NOTE ON SOURCES

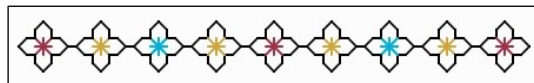
Early-16th-century designers/publishers whose texts I consulted closely, along with dates and places of publication, include: Antoine Belin (1545, Lyon); Christian Egenolff (1535, Frankfurt); Hans Hofer (1545, Augsburg); Claude Nourry (1532, Lyon); Matteo Pagano (1546, Venice); Peter Quentel (1529/1541, Cologne); Domenico da Sera (1532, Lyon); Giovanni Andrea Vavassore (1530/1532, Venice); Nicolò Zoppino (1529/1532, Venice).

I also consulted several later 16th-century sources, including: Nicolaus Bassee (1571, Frankfurt); Johann Siebmacher (1597, Nürnberg); Federico de Vinciolo (1587, Paris).



## Cliffside Stitches

traditional designs for modern times



cliffsidestitches.com  
cliffsidestitches@gmail.com